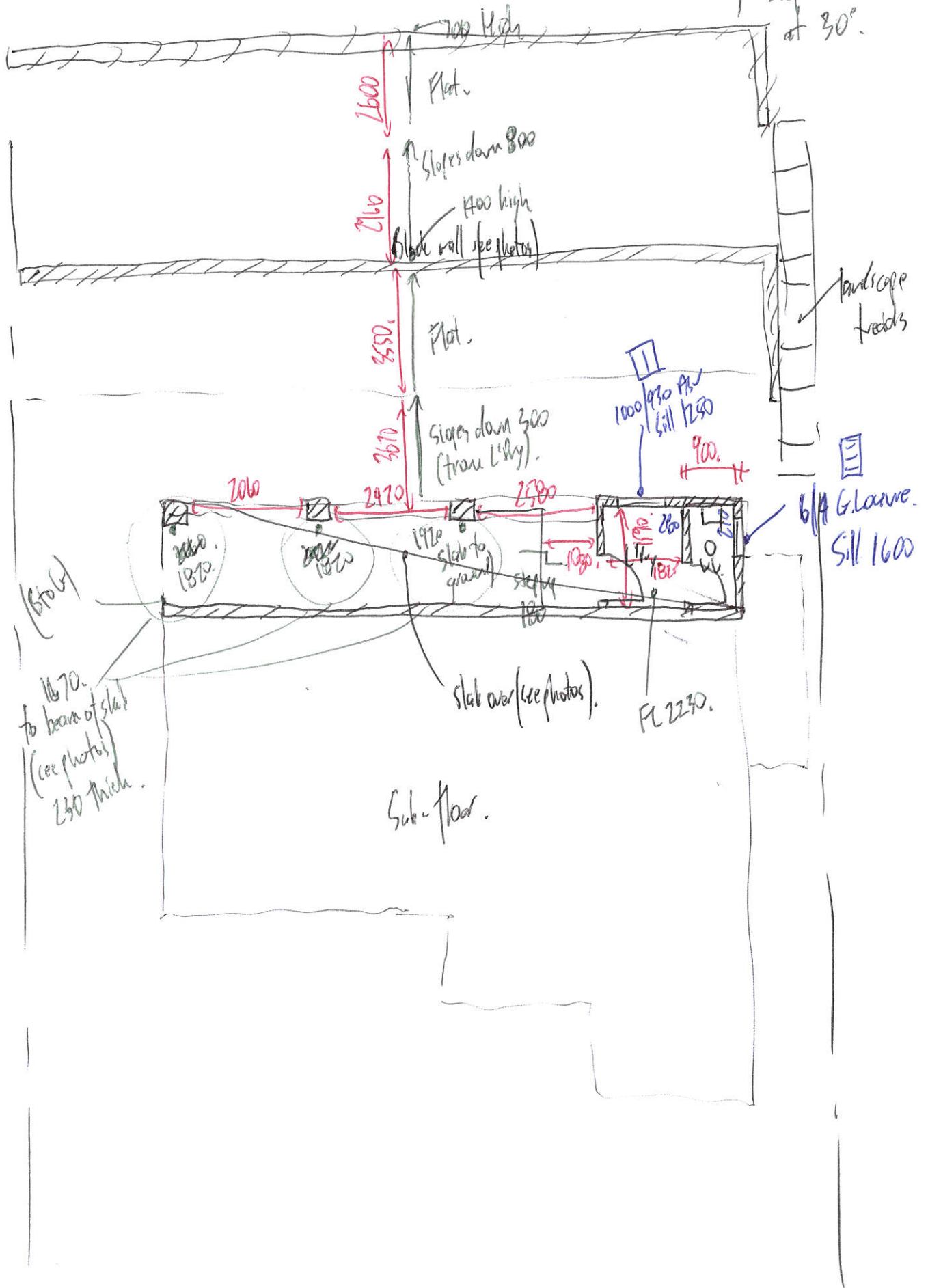


↑ Slopes down at 30°.



1600

2110

2550

3670

2060

2470

2700

900

1000/930 Plw
Sill 1290

6/11 Glassw.
Sill 1600

(Brock)

to beams of slab
(see photos)
230 thick.

Sub-floor.

Slab over (see photos).

FL 2270.

700 High

Plat.

Slopes dam 800

400 high

Black wall (see photos)

Plat.

Slopes down 300
(from L/Sy).

Landscape treeds

6/11

Glassw.
Sill 1600